



Literature 200 series documents
C.O.I.S. TD 400 series documents
CSI 3 part 600 series documents

C.O.I.S. Technical Data Sheet

CAD
Operation
Installation
Specification

Document #404
Issued 08-2007

MODEL
100SSC-SM

Recessed version-
See document #405

Stock item as of Sept. 07

Document Index

Pg. 1 Coversheet

Pg. 2 CAD Drawings

Pg. 3-5 Install/CMW (Cleaning, Maintenance, Warranty)



INSTALL FOR ADA COMPLIANCE (CAL UBC Title 24)

SIDE VIEW OPEN

- Max Protruding Objects

- o 4.4.1
- o Unit does not exceed 4".

- Forward Reach

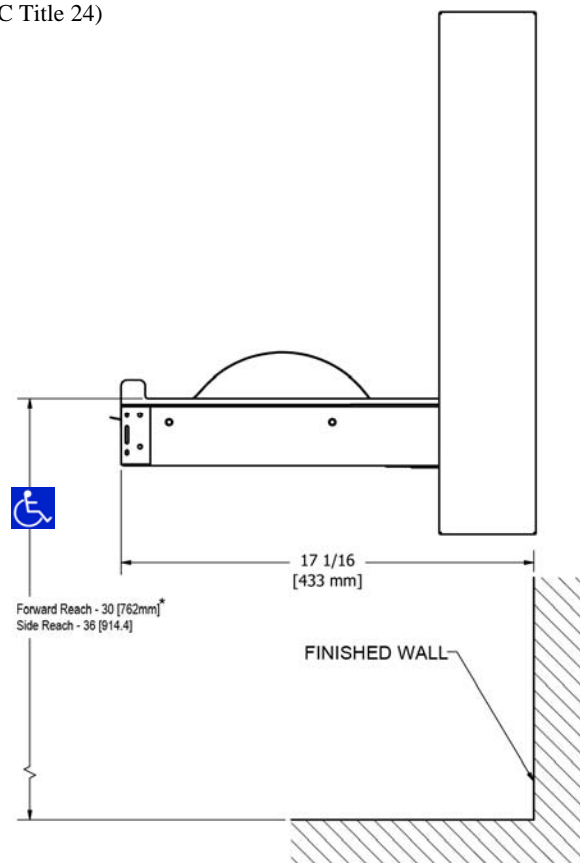
- o 4.2.5
- o Mount bottom of unit no higher than 30" AFF.

- Side Reach

- o 4.2.6
- o Mount bottom of unit no higher than 36" AFF.

- Operations

- o 4.27.4
- o Compliant



Also available as PDF



Stock item as of Sept. 07

Technical drawing of a door assembly. The drawing shows a side view of a door with a handle. The door is labeled "FINISHED FLOOR" and "Forward Reach - 30" (762mm)*". The handle is labeled "Side Reach - 36" (914.4)". The door is shown in an open position, with a dimension of 4" (102mm) indicating the distance from the door edge to the handle. The door is shown in a closed position, with a dimension of 21 5/8" [549 mm] indicating the distance from the door edge to the handle.

BACK VIEW

Forward Reach - 30" [762mm]*
Side Reach - 36" [914mm]

17 1/16" [433 mm]

FINISHED WALL

FINISHED FLOOR

Forward Reach - 30 (762mm)*
See Reach - 36 (914.4)

BACK VIEW

Forward Reach - 30 (762mm)*
Side Reach - 36 (914)

FINISHED WALL

Diagram illustrating the back view of the chair. The diagram shows the chair's backrest and seat. The vertical dimension is labeled "Forward Reach - 30 (762mm)*". The horizontal dimension is labeled "Side Reach - 36 (914)". The wall behind the chair is labeled "FINISHED WALL".

[illegible][illegible]

100SSC-SM

Operation:

Pneumatic cylinder provides controlled, slow opening and closing of bed. No hinge structure exposed on interior and exterior surfaces. Changing surface resists odors and bacterial growth. Rated for infant and accessories up to 50lbs (22.68kg) when properly installed.

Warning: Diaper changing stations are no stronger than the anchors or wall to which they are attached and, therefore, must be firmly secured in order to support the loads for which they are intended.

CMW:

- **Cleaning-**
Brocar polyethylene and stainless diaper changing stations should be cleaned with a soft cloth or sponge and a non-abrasive cleaner. Warm water or an organic solvent can be used. The preferred solvent is one that does not contain chlorine, such as acetone, methyl alcohol, or mineral spirits. There are many compounded or blended organic cleaners commercially available to optimize attributes of both cleanliness and safety.
- **Inspection-**
Safety strap: Inspect the buckle and strap for proper functioning as part of the facility's washroom cleaning and maintenance schedule.

Closing cylinder: If the unit will not stay fully closed, the closing cylinder may need to be replaced.

Safety label: If the safety label is missing, restrict the unit from use by taping it closed as well as labeling it "inoperable" or removing the unit from wall until a new label is installed.

Hinges, mounting hardware: Ensure that the hinges and mounting bolts are not loose by pulling the unit toward you and from side to side. If any play exists greater than ¼" or 2.5mm in any direction, discontinue use of the unit by taping it closed or removing it from the wall, as well as labeling the unit "inoperable." Contact professional maintenance personnel to diagnose and correct the problem.

- Instructions For Use

Information for product use is presented in the form of five graphic symbols within labeling adhered to each product. The symbols and color scheme design comply with ANSI Z535.4 Product Safety Signs & Labels, ANSI Z535.3 Criteria for Safety Symbols and ANSI Z535.1 Safety Color Code. As noted above, verification of this label's presence on the unit should be made a part of daily cleaning.

- Warranty and Liability

Product Liability Insurance

General Liability: \$1,000,000. Excess liability \$10,000,000.

Warranty

Brocar Products, Incorporated warrants its products against defective material and manufacturing defects (but not improper use) for a period of five years after sale. Brocar Product's liability under this warranty shall be limited to the repair or replacement of the defective product. There shall be no other remedy available, including without limitation, recovery for incidental or consequential damages, injury to person, property, or any other incidental or consequential loss.

The warranty described above shall be IN LIEU OF any other warranty, expressed or implied, including without limitation, any implied warranty of MERCHANTABILITY or fitness for a particular purpose.

Installation:

The unit has four mounting holes based on a 16" (41cm) stud center, and two additional mounting holes towards the center of the changer. If the wall has wooden or metal studs, locate the studs first. If the wall does not have studs spaced 16" on center, additional blocking is necessary. Contact an architect and building official to make sure the blocking is adequate and complies with building codes.

Drilling the Holes and Mounting the Station:

1. Find the stud where the left side of the station will be mounted to the wall.
2. Measure 42" (1067mm) up from the floor, at the center of the stud, and mark the wall. This will locate the bottom of changing surface approximately 31" (788mm) above the finished floor.
3. Line up the top left mounting hole with the mark you made on the wall. Mark remaining holes using a level and measuring tape to precisely position unit. Make sure you have taken the operating clearance into consideration.

Using Wood Screws:

If the finished wall surface is tile or masonry over wood studs, use a 7/32 (6mm) masonry drill bit for the pilot hole until you hit the stud, then change to a 1/8"(3mm) bit. Use four 1/4 x 3" (M6 x 76mm) wood screws and eight washers. For center-located holes, use the toggle fastener method.

Toggle Fastener: If the wall has wood studs that are not on 16"(405mm) centers, has metal studs, or has an underlying surface of concrete block, then drill with a 1/2"(13mm) masonry bit. You must allow a minimum of 2 1/2" (64mm) of inside space for the toggles to turn. Insert and tighten (6) toggle fasteners. Position the station over toggles, insert six 1/4" -20 x" (M6 x 76mm) machine screws with washers, then tighten. Conceal the screws heads with plastic mounting caps, which snap into place over mounting holes.

For all other substrate types, please contact an architect or qualified building engineer for installation recommendations.

Specification:

Stainless Steel Diaper Changing Stations

1. Acceptable product: Brocar Products, Inc.; Model 100SSC-SM (surface mounted)
2. Characteristics:
 - a. Full body, brushed stainless steel, seamless welds.
 - b. Provide Brocar Products SS-Flange in order to surface mount unit.

Materials:

Polyethylene body with stainless steel exterior. Full stainless steel frame and hinges provide maximum durability; equipped with a pneumatic cylinder. Unit features integrated liner dispenser and baggage hooks; smooth concave changing area; plastic coated safety strap, and universal ASTM compliant instruction graphics.